

SERIES 58 Low Watt Sub-Miniature Valves (3.5 WATTS)

SERIES L58 Low Watt Sub-Miniature Valves (0.9 WATTS)

Meet today's demands for economy of space and energy consumption.

APPLICATION:

The Series 58 can be easily interfaced with circuit boards and miniaturized components. The versatility is for connecting electronic signals to pneumatic outputs. The small size is ideal for stand alone (with #10-32 ports) or multiple valves mounted on one manifold. May be used to "pilot" larger valves. These valves are ideal for micro electronic production equipment and medical or chemical analytical applications and can operate directly from most programmable controllers.



SPECIFICATIONS—

OPERATING CONDITIONS

Media: Air and other common gasses - filtration recommended 30 microns or less.

Valve Temperature Range: Standard Valves - 5°F (-15°C) to 122° F (50° C) ambient; media.

Maximum Operating Pressure Differentials: See catalog listings

Burst Pressure: 1500 PSI

Leakage: Bubble tight for standard valves

Vacuum: To 5 Microns - Consult factory

Coil Voltage: 6 to 220 VAC 50-60 Hz. - 2 to 150V DC. All standard voltages (U.S. & Export) carried in stock. Special voltages readily produced on order.

ELECTRICAL CHARACTERISTICS

Nominal Power:	Series	Watts
Table A	58	3.5
Table B	L58	0.9

Coil Construction: Molded

Typical Response Time on Air: AC - 3 TO 9 ms. DC - 9 ms.

Duty Cycle: Continuous or intermittent

MECHANICAL CHARACTERISTICS

Material: Moving parts - stainless steel
Body - Plastic
Seals - Nitrile (Buna N) Standard. FKM or EPDM ® Optional.

Orifice Diameter: See catalog listings

Porting: 10-32 Thd., Stud Mount, Manifold Mount

Life expectancy: Millions of cycles, depending on application, lubrication, etc.

Valve Weight: Approximately 2 oz.

Repair Packs: Consult factory.

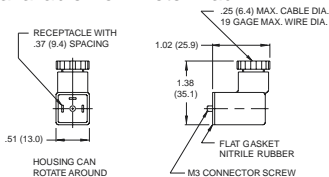
Options: Stainless Steel or Brass Body
Stainless Steel or Brass 10-32 Thd. Stud Mount

FOR FLOW CHARTS SEE PAGES 95-97

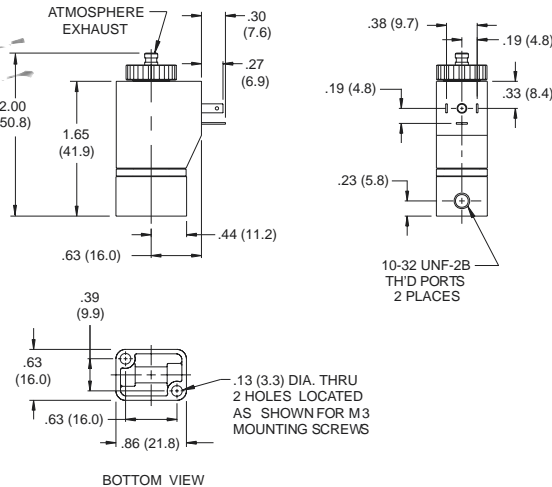
For Numbering system chart see page 105

MINIATURE SOLENOID VALVE OPERATORS

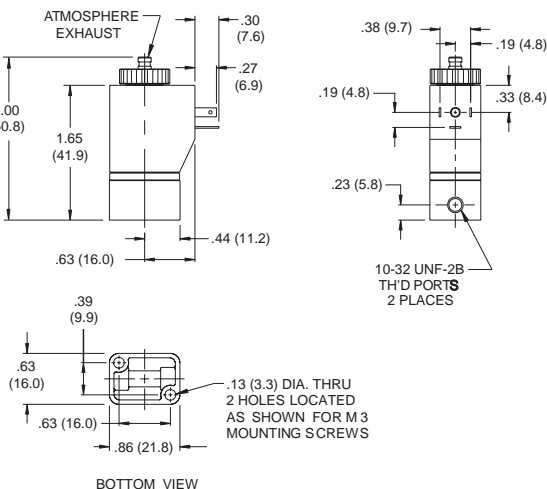
A complete line of valve operators for O.E.M. applications are offered for those who wish to incorporate them in their own product line. Full technical information and details are available from Peter Paul.



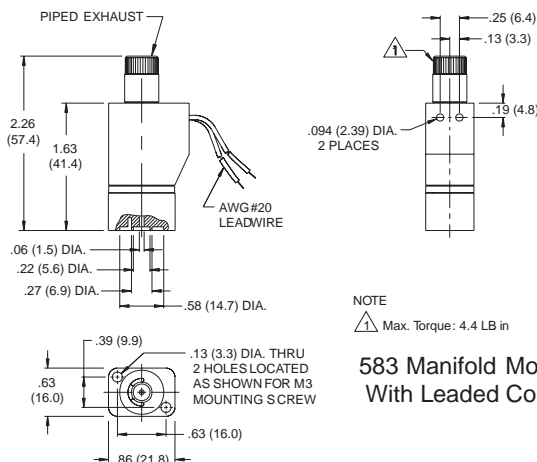
With European Style Micro DIN Connector Plug number 58-19005



2-Way Normally Closed



3-Way Normally Closed Exhaust to Atmosphere



583 Manifold Mount With Leaded Coil

3-Way Normally Closed Piped Exhaust