

# SERIES 40 PLASTIC VALVES (3.3 WATTS AC AND 5 WATTS DC)

## APPLICATION:

General purpose valves are engineered for competitive cost and reliable service in humidifiers, pneumatic actuation systems, beverage dispensers and other equipment.

## SPECIFICATIONS—

### OPERATING CONDITIONS

**Media:** The valves may be used with air, inert gas and liquid media.

**Valve Temperature Range:** Standard Valves - 0°F (-18°C) to 104°F (40°C) ambient; 0°F (-18°C) to 150°F (60°C) media. Optional Valves - can tolerate much higher or much lower ambient and media temperatures. Consult factory for specifications.

**Maximum Operating Pressure Differentials:** See catalog listings

**Burst Pressure:** 1000 PSI

**Leakage:** Bubble tight for standard valves

**Vacuum:** To 5 Microns - Consult factory

### ELECTRICAL CHARACTERISTICS

**Coil Voltage:** 24 to 277 VAC 50-60 HZ.—6 to 120 VDC. All standard voltages (U.S. & Export) carried in stock. Special voltages readily produced on order.

**Nominal Power:**

	D.C. VALVES	A.C. VALVES
	5 Watts	3.3 watts

**Coil Construction:** Standard, Molded with 24" leads.

**Typical Response Time on Air:** 4-16 Milliseconds

**Operating Speed:** Up to 600 CPM

**Duty Cycle:** Continuous or Intermittent

### MECHANICAL CHARACTERISTICS

**Material:** All interior parts are stainless steel and, acetal and PET.

**Orifice Diameter:** See catalog listings

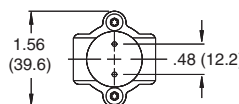
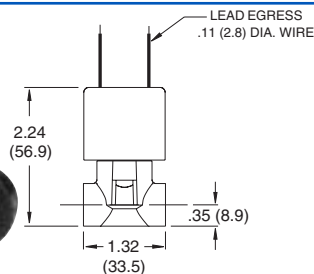
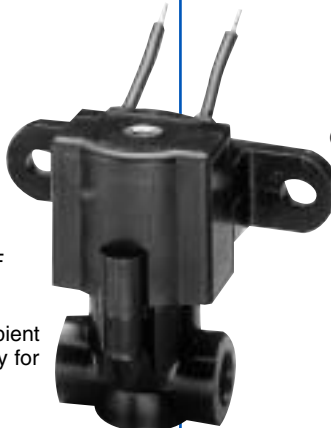
**Porting:** 1/8 NPT

**Life expectancy:** Millions of cycles, depending on application, lubrication, etc.

**Valve Weight:** Only .27 (14 1/2 oz.) lbs average

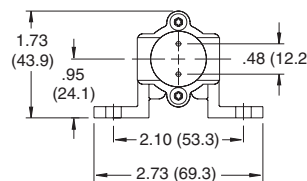
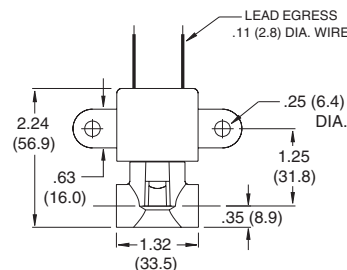
**Repair Packs:** Consult Factory

FOR FLOW CHARTS SEE PAGES 95-97



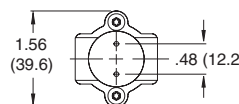
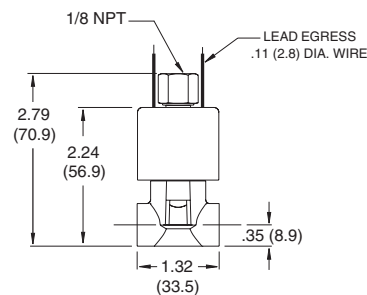
BOTTOM MOUNTING HOLES  
.072 (1.83) DIA. X .19 (4.8) DEEP  
(#2 PLASTITE SCREWS)

### 2-Way and 3-Way Normally Closed Exhaust to Atmosphere



BOTTOM MOUNTING HOLES  
.072 (1.83) DIA. X .19 (4.8) DEEP  
(#2 PLASTITE SCREWS)

### With Bracket



BOTTOM MOUNTING HOLES  
.072 (1.83) DIA. X .19 (4.8) DEEP  
(#2 PLASTITE SCREWS)

### 3-Way Normally Closed Piped Exhaust

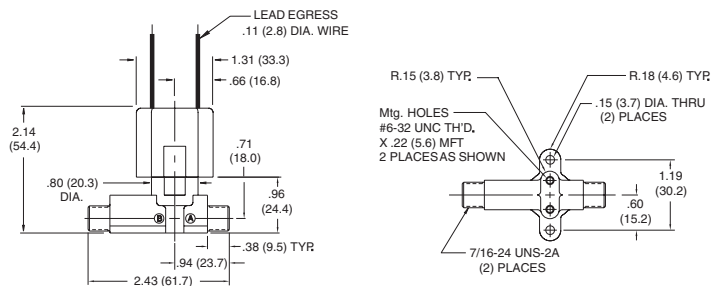
# SOLENOID VALVES . . .

MODEL TYPE	FLOW CONFIGURATION	Valve No: Without Bracket	Valve No: With Bracket	Max Operating Pressure Differential		Orifice Size		CV Factor	
				AC	DC	Inlet	Exhaust	Inlet	Exhaust
<b>Model 42</b> 2 Way Normally Closed		42G5DGM**	42G5DBM**	300	300	1/32		0.022	
		42H5DGM**	42H5DBM**	300	150	3/64		0.055	
		42J15DGM	42J15DBM	300	100	1/16		0.090	
		42K15DGM	42K15DBM	250	60	3/32		0.145	
		42N15DGM	42N15DBM	125	30	1/8		0.200	
<b>Model 43</b> Exhaust To Atmosphere		43JJ15DGM	43JJ15DBM	150	150	1/16	1/16	0.090	0.075
		43KK15DGM	43KK15DBM	60	60	3/32	3/32	0.145	0.145
		43NK15DGM	43NK15DBM	30	30	1/8	3/32	0.200	0.145
<b>Model 43</b> Piped Exhaust		43JJ15XGM	43JJ15XBM	150	150	1/16	1/16	0.090	0.075
		43KK15XGM	43KK15XBM	60	60	3/32	3/32	0.145	0.145
		43NK15XGM	43NK15XBM	30	30	1/8	3/32	0.200	0.145

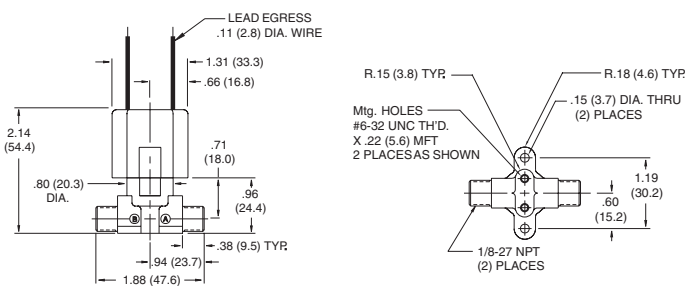
## SERIES 40 SOLENOID VALVES OPTIONAL BRASS BODIES\*



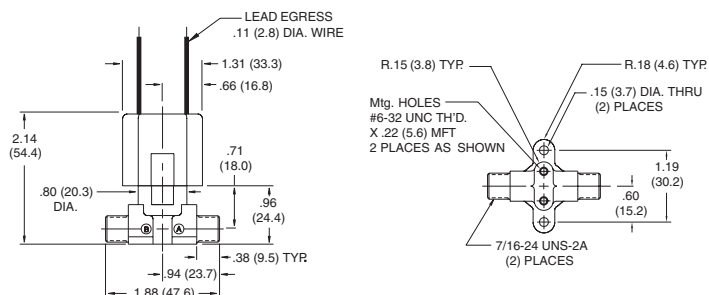
S-40 Forged Brass Body,  
1/4 Compression fittings, with Filter  
Available with or without bracket.



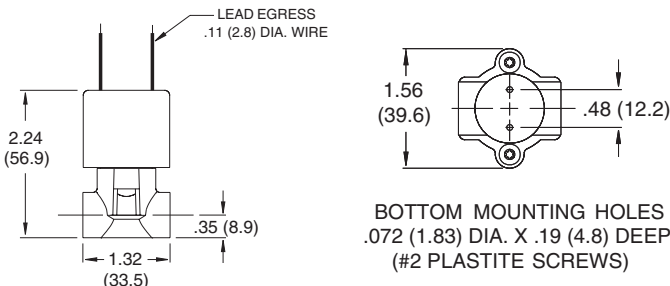
S-40 Forged Brass Body, 1/8 NPT Male Fittings  
Plastic Overmold  
Available with or without bracket.



S-40 Forged Brass Body, 1/4 Compression fittings,  
Plastic Overmold  
Available with or without bracket.



S-40 Forged Brass Body, 1/8 NPT Female fittings,  
Plastic Overmold  
Available with or without bracket.



\*\* These orifice sizes available only with Brass Bodies  
\* Brass Bodies have a 3/32 Maximum Orifice Size.